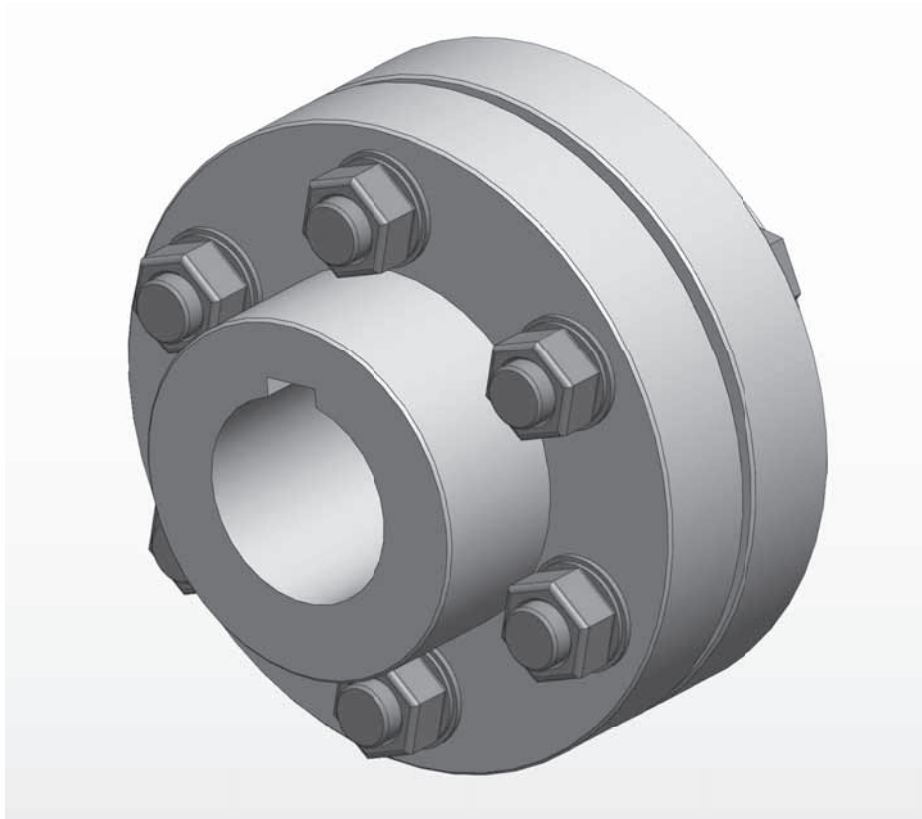


# TECHN FLEX



## RIGID COUPLINGS

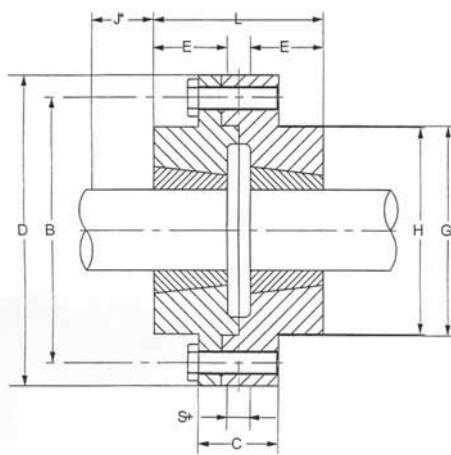
ติดต่อฝ่ายขายโทร.02-408-1000

Taper bush Rigid couplings provide a convenient method of rigidly connecting ends of shafts. Taper bushes permit easier and quicker fixing to the shafts with the firmness of a shrunk on fit. These couplings have a fully machined male and female flange. The male flange can have the bushing fitted from the Hub side A or from the Flange side B; the female flange (F) always has the bushing fitted from the Flange side B. This gives two possible coupling assemblies as AA and BB. When connecting horizontal shafts, the most convenient assembly should be chosen. For connecting vertical shafts use assembly BB only.

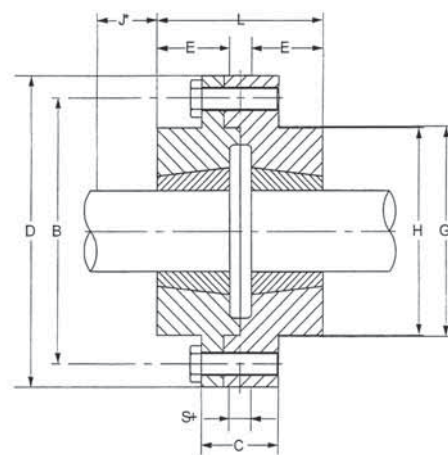
## Selection

For all application using standard mild steel shafting it is sufficiently accurate to select the coupling by consideration of bore size alone. For all other applications consult

Coupling Assembly AA



Coupling Assembly BB



## Taper Bushed couplings

couplings Size	Bushing Data		Dimensions.									Weight** (kg)
	Bushing No	Max Bore (mm)	D	C	E	H	G Nominal	B Nominal	S+	J*	L	
TF12	1210	32	118	35	25	83	76	102	7	38	57	3,5
TF16	1615	42	127	43	38	80	89	105	7	38	83	4,5
TF25	2517	60	178	51	45	123	127	149	7	48	97	11,0
TF30	3020	75	216	65	51	146	152	181	7	54	109	20,0
TF35	3525	100	248	75	65	178	178	213	7	67	137	34,0
TF40	4030	110	298	76	76	210	216	257	7	79	159	59,0
TF45	4535	125	330	86	89	230	241	246	7	89	185	80,0
TF50	5040	125	362	92	102	266	267	314	7	92	211	135,0

All Dimensions in mm

J\* is the wrench clearance to allow for tightening and loosening the bush on the shaft.

The use of a shortened wrench will permit this dimension to be reduced

S+ is the distance between shaft ends

\*\*Weight given are for couplings with midrange Taper bushes.

## Designations

Size	coupling Assembly AA		coupling Assembly BB	
	Male	Female	Male	Female
TF12	TFA12HH	TFA12FF	TFB12HH	TFB12FF
TF16	TFA16HH	TFA16FF	TFB16HH	TFB16FF
TF25	TFA25HH	TFA25FF	TFB25HH	TFB25FF
TF30	TFA30HH	TFA30FF	TFB30HH	TFB30FF
TF35	TFA35HH	TFA35FF	TFB35HH	TFB35FF
TF40	TFA40HH	TFA40FF	TFB40HH	TFB40FF
TF45	TFA45HH	TFA45FF	TFB45HH	TFB45FF
TF50	TFA50HH	TFA50FF	TFB50HH	TFB50FF

A complete coupling consists of one male and one female flange

Example: Coupling Assembly AA : TFA12HH and TFA12FF

Coupling Assembly BB : TFB12HH and TFB12FF